

SERVICE WE ARE HERE TO HELP YOU!

RIKUTEC FRANCE

107 rue de Phalsbourg
67320 Drulingen | France
T +33 3 88016800
F +33 3 88016060
info@rikutec.fr
www.rikutec.fr

RIKUTEC IBERIA

Polig. Industrial de Lantarón,
Parcelas 15-16, 01213 COMUNIÓN - ÁLAVA | Spain
T +34 945 332 100
F +34 945 332 286
info@rikutec.es
www.rikutec.es

RIKUTEC Group

Rhöndorfer Str. 85
53604 Bad Honnef | Germany
T +49 2681 95 46 - 0
F +49 2681 95 46 - 33
info@rikutec.de
www.rikutec.de



RIKUTEC 220 SERIES

THE TANK SERIES FOR INDIVIDUAL
LARGE-SCALE PROJECTS



RIKUTEC FRANCE SAS - R.C. Saverne: RCS 824 786 537 00020 - AQUA'TERNE 185 - 05/2024
Documents et photos non contractuels. Sous réserve de modifications techniques.
Illustrations 3D, photos et schémas: RIKUTEC, Shutterstock, Fotolia, Christian Staebler.
Imprimerie: Scheuer, Drulingen (67).



RIKUTEC 220 SERIES

The tank series for individual large-scale projects

CHARACTERISTICS

- Available in individual load classes
- Up to heavy load transportation
- Available in the volumes 10.000 – 60.000 ltr.
- Manhole systems up to DN 1000
- Groundwater stable
- Made of HDPE - lighter than concrete and steel
- Available connections in DN 150 to DN 400
- Suitable for extreme installation conditions

APPLICATIONS

- Rainwater harvesting and retention
- Wastewater treatment plants
- Firefighting water tank
- Cooling units/systems
- Industrial laundry facilities
- Car/truck washing bays
- Irrigation of green areas and parks



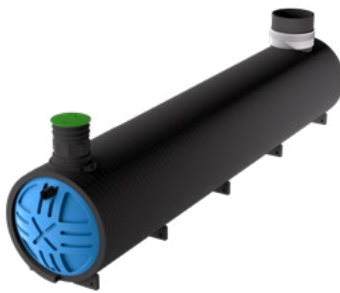
AQUA'TERNE 220
25.000 ltr.

The 220 tank series offers versatility in installation, thanks to its robustness accommodating load classes up to SLW 60

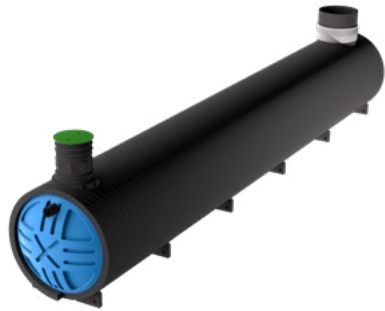
Technical data



RIKUTEC 220 Series
10.000 ltr.



RIKUTEC 220 Series
25.000 ltr.



RIKUTEC 220 Series
40.000 ltr.

Volume ltr.	Length mm	Width* mm	Weight* kg
10.000	3.880	230	1395
15.000	5.470	230	1905
20.000	7.060	230	2415
25.000	8.650	230	2926
30.000	10.250	230	3439
35.000	11.840	230	3949
40.000	13.430	230	4459
45.000	15.020	230	4969
50.000	16.610	230	5480
55.000	18.200	230	5990
60.000	19.790	230	2350

*Based on SN8 Version

Tank is available in the following SN load classes:

- SN4 = Accessible by car / truck [SLW 30]
- SN8 = Accessible by heavy load transportation [SLW 60]